



Class of 2015  
*Follow-up Study*

Career Services

# Executive Summary

The following pages detail the results of the Follow-up Survey for the Class of 2015. This report is a summary of the career fields and graduate schools in which members of the Class of 2015 were engaged six to nine months after they graduated. Information collected is shared with the St. Lawrence community including University Communications, Admissions, academic departments, and University Advancement to assist other staff in accomplishing their work objectives. The annual study helps us to assess our effectiveness by capturing real outcomes; it informs future planning and areas of emphasis through the discovery of the destinations of our graduates; and it serves as a source of pride as we celebrate our graduates' successes.

In summary, 446 of the 562 graduates reported their career status for a 79.4 percent return rate. Respondents completed the survey on-line or over the phone with a career services staff member. Graduates were mailed a postcard with the survey site address, and subsequent follow-up was conducted through personalized emails and phone calls. Career services also collaborated with faculty, other administrative staff, and coaches, asking them to contact non-respondents to have them complete the survey. Data were collected between early-December, 2015, and February, 2016.

Members of the Class of 2015 fared well with a total career outcome rate of 96.9 percent, similar to the 96.8 percent last year. Of the 96.9 percent, 78.4 percent were primarily pursuing a career and had obtained a full-time or part-time job and 18.4 percent were attending graduate or professional school either full-time or part-time as their primary activity. The percentage of respondents "in transition" decreased to 3.1 percent from 3.2 percent in 2014. According to the annual survey conducted by the National Association of Colleges and Employers, the career outcome rate nationwide for 2015 graduates was 82 percent, and, for institutions comparable in size to St. Lawrence, 90.3 percent, so our new alumni outcomes are well above national averages.

The Class of 2015 continued the trend upward in full-time employment with 66.3 percent of respondents in that category compared to 65.6 percent in 2014 and 61.5 percent in 2013. Of those, 49 percent had secured employment prior to or within one month after graduation, up from 43 percent the previous year. Ninety-five percent are either generally satisfied or very satisfied with their current employment, and 84 percent report their position is typically held by someone with a bachelor's degree or higher, up from 82 percent in 2014.

Top career field destinations of this class include education, finance and banking, health professions and technology. Teaching/coaching/training remains the top job function with research and analysis joining sales, financial services, and customer service as other popular jobs.

Graduate and professional school enrollment, as a primary activity, held relatively steady at 18.4 percent, down slightly from 18.7 percent last year. Improving job prospects for recent graduates may deter some from immediately pursuing further education (NACE has the national average at 19 percent), but we know from previous surveys that over 50 percent of SLU graduates seek further studies within five years of graduating. Education climbed back to its top spot after having slipped to fourth place a year ago, with health-related studies, medicine, law and technology as other top fields of study. The 2015 class seems to have made fewer applications and there were fewer overall acceptances as a whole (95.7 percent acceptance rate compared to 98.1 percent in 2014).

The number of respondents who reported they had done one or more internships during their undergraduate years continues to climb, reflecting an increased focus on experiential learning as a key feature of a St. Lawrence education. Almost 70 percent of the Class of 2015 completed an internship.

The following detailed report contains information on the top career industries and job functions, salary ranges, a sampling of jobs, a breakdown of graduate school attendance, a sampling of graduate and professional school programs, and internship information.

Ron Albertson

Director of Career Services

July 2016

# Follow-up Study: Class of 2015

St. Lawrence University, as of March 1, 2016

<u>Category</u>	<u>Respondents</u>	<u>Percentage</u>
-----------------	--------------------	-------------------

## CAREERS

Employed Full-Time	295	66.3%
Employed Full-Time Volunteer Activity	7	1.6%
Employed Full-Time, Attending Graduate School Part-Time	0	0.0%
Employed Full-Time, Other Professional/Baccalaureate Education FT	1	0.2%
Employed Full-Time, Other Professional/Baccalaureate Education PT	1	0.2%
Employed Full-Time Volunteer, Graduate School Part-Time	0	0.0%
<b>Total Employed Full-Time</b>	<b>304</b>	<b>68.3%</b>

Employed Part-Time	41	9.2%
Employed Part-Time, Attending Graduate School Part-Time	1	0.2%
<b>Total Employed Part-Time</b>	<b>42</b>	<b>9.4%</b>

Internships or Research Experience, Unpaid	3	0.7%
--	---	------

<b>Total Primarily Pursuing a Career</b>	<b>349</b>	<b>78.4%</b>
--	------------	--------------

## POSTBACCALAUREATE EDUCATION

Graduate School Full-Time	31	7.0%
Graduate School Full-Time, Volunteer Part-Time	1	0.2%
Graduate School Full-Time, Employed Full-Time	12	2.7%
Graduate School Full-Time, Employed Part-Time	32	7.2%
Graduate School Part-Time	0	0.0%
Other Professional Post-Baccalaureate Education FT	5	1.1%
Other Professional Post-Baccalaureate Education PT	1	0.2%
<b>Total Primarily Graduate/Professional School</b>	<b>82</b>	<b>18.4%</b>

Other Post-Baccalaureate Education	0	0.0%
------------------------------------	---	------

<b>Total Primarily Pursuing Education</b>	<b>82</b>	<b>18.4%</b>
---	-----------	--------------

## TRANSITION

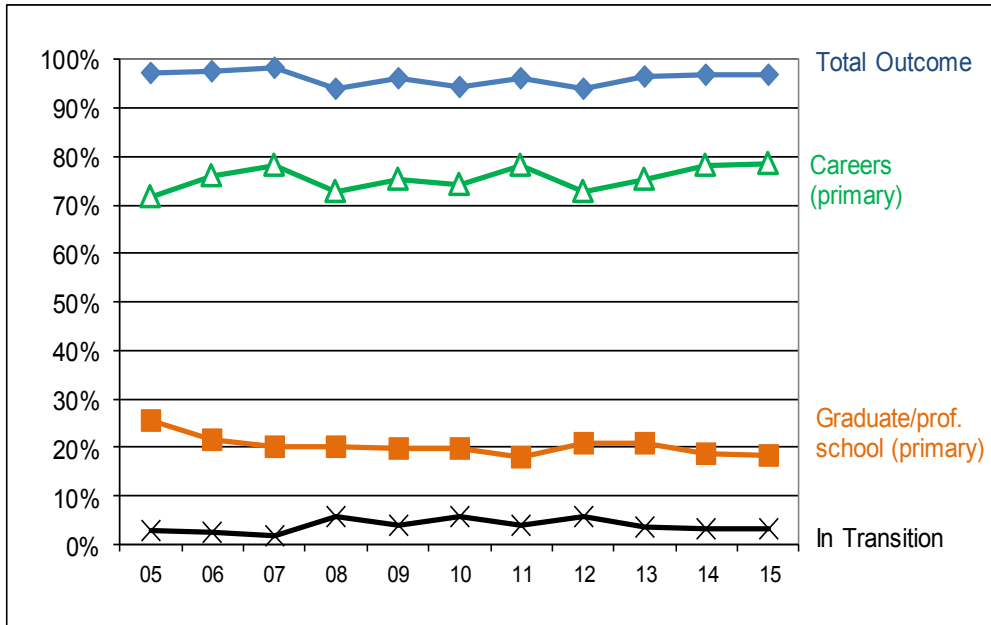
In Transition -- Pursuing Employment	14	3.1%
--------------------------------------	----	------

## SUMMARY

<b>*Final Outcome Rate:</b>	<b>431/445</b>	<b>96.9%</b>
-----------------------------	----------------	--------------

\* Data analysis excludes 1 new graduate who is neither pursuing a job or graduate study at the time of the survey.

# Final Report Comparison: 2005-2015



	Careers (primary)	Graduate/ Professional School (primary)	Other Post- baccalaureate Education	In Transition	Outcome Rate
2005	70.3%	25.1%		4.6%	95.4%
2006	74.8%	21.0%		4.1%	95.9%
2007	77.5%	19.9%		2.6%	97.4%
2008	72.2%	19.9%	1.3%	6.3%	93.6%
2009	73.3%	19.3%	0.8%	6.5%	93.5%
2010	73.6%	19.4%	0.2%	6.8%	93.2%
2011	77.6%	16.7%	1.0%	4.7%	95.3%
2012	72.6%	20.8%	1.4%	5.9%	94.1%
2013	75.3%	20.7%	0.5%	3.5%	96.5%
2014	78.1%	18.7%		3.2%	96.8%
2015	78.4%	18.4%		3.1%	96.9%

# Top Career Industries and Functions

The top career industries represented by the Class of 2015 for those employed are below. Each industry represents the type of employer where each graduate is working as their primary status.

<b>Rank</b>	<b>Field</b>	<b>% of Respondents</b>	<b># of Respondents</b>
1	Education	18%	64
2	Finance/Banking	13%	46
3	Health Care	9%	31
4	Technology	7%	24
5	Sports and Recreation	5%	17
6	Retail/ Wholesale	4%	15
7	Social/ Human Services	4%	14
8	Staffing and Executive Search	3%	12
9	Consulting	3%	11

Graduates were also asked about their specific job function. The top job functions for the class are listed below for primary status as employed.

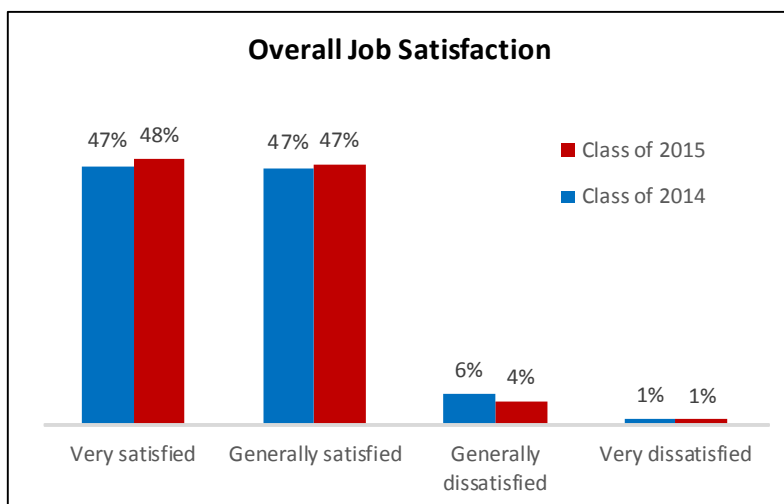
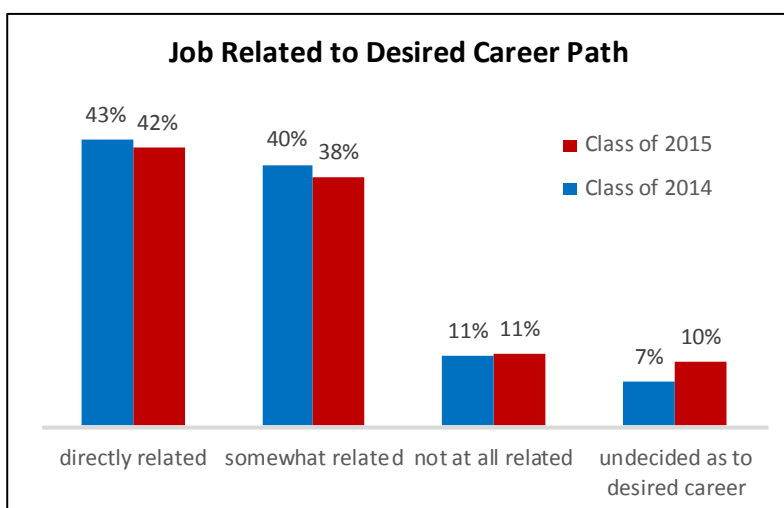
<b>RANK</b>	<b>JOB FUNCTION</b>	<b>% OF RESPONDENTS</b>	<b># OF RESPONDENTS</b>
1	Teaching/Coaching/Training	17%	61
2	Sales	9%	33
3	Financial Services	8%	28
4	Research/Analysis	8%	27
4	Customer Service	8%	27
5	Health Services	6%	21
6	Administration Management	5%	17
7	Business Development	4%	14
8	Account Management/Planning	3%	10

# Satisfaction Information

## Satisfaction Information

At the time of this survey, 295 graduates reported full-time employment. Of those reporting, 42% indicated their job was *directly* related to their desired career path which continues to remain steady, 43% in 2014. An additional 38% of the respondents reported they were in a job that was *somewhat* related to their desired career path. More graduates in the Class of 2015 reported that they secured their jobs prior to or within a month after graduation (49% in 2015 and 43% in 2014).

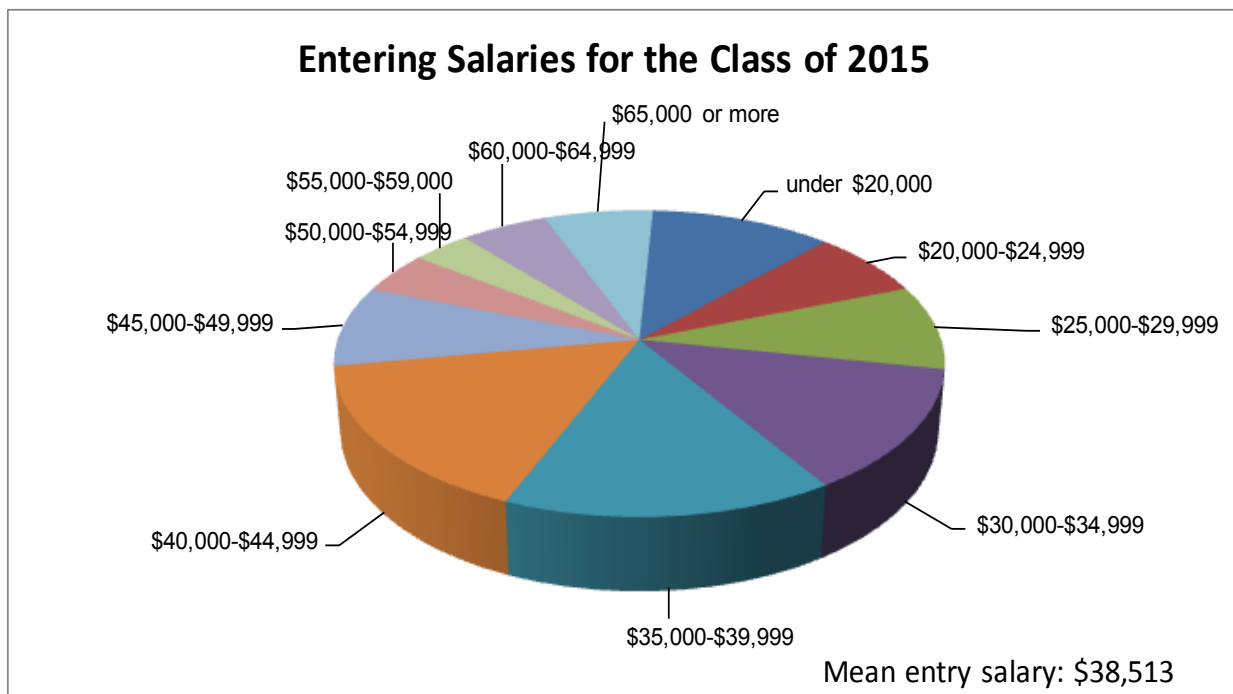
St. Lawrence University graduates in the Class of 2015 working full-time were highly satisfied with their employment with 95% very satisfied or satisfied with their current job. This remains similar to last year's 94%. Results of this survey show that more than half of the respondents sought out and accepted positions related to their desired career path and were satisfied with that employment. In addition, 84% of graduates reported being engaged in employment that would typically be held by someone with a bachelor's degree or higher, an increase of 2% since last year.



# Salary Information

## Salary Information

The overall median salary range for those in full-time employment increased from \$35,000-35,999 in 2014 to \$37,000-37,999 in 2015. While the median increased, the mean decreased, suggesting that the salary distribution clusters more in the middle income categories; fewer 2015 graduates reported salaries below \$30,000 and fewer earned salaries of \$69,000 and above compared to last year.



# Sampling of Jobs

Industry	Company/Organization	Job Title
<b>Accounting</b>	Price Waterhouse Coopers	Risk Assurance Associate
<b>Advertising</b>	McCann Erickson	Translations Manager
<b>Agriculture and Natural Resources</b>	St. Lawrence Country Soil and Water	District Technician
<b>Arts &amp; Entertainment</b>	Columbus Fine Art	Registrar and Gallery Assistant
	Creative Artists Agency	Agent Assistant
	FOX	Producer
	Museum of Modern Art	Guest assistant
<b>Biotech &amp; Pharmaceuticals</b>	Albany Molecular Research Inc	Research Scientist I
	Bausch Lomb	Supplier Quality Specialist
	EMD Millipore	Associate Product Manager
	Instrumentation Laboratory	Research Associate
	Kinney Drugs Inc	Pharmacy Technician
	Regeneron Pharmaceutical	Biotech Production Specialist
	Rite Aid	Pharmacy Technician
<b>Business Services</b>	AECOM	Associate Analyst
	Emissary	Recruiter
	Erie Materials, Inc.	Inside Sales
<b>Communications/Media</b>	Belgrade News	News Reporter
	Fox 68 My 43	Account Executive
	GroupM	Assistant Negotiator
<b>Construction</b>	BPAS Actuarial and Pension Services	Associate
	Class Action Capital	Sales associate
	IPSOS Business Consulting	Business and marketing analyst
	John Snow Inc.	Project Associate
	Noblis	Intelligent Transportation Systems Analyst
	Pearl Meyer	analyst
	SRM Consulting	Stakeholder Engagement Analyst Specialist
<b>Consumer Goods</b>	Advantage Solutions	Leadership Development Associate
	Aspire Lifestyles	customer care professional
	The Estee Lauder Companies	Presidential Associate
<b>Education</b>	Bergamo Montessori School	Assistant Teacher
	Best Learning	Foreign Teacher
	Beverly Public Schools	Paraprofessional
	Brewster Academy	English teacher/ Head basketball coach
	Canton School District	Substitute Teacher
	Community School	Intern
	Community School	Long Term Substitute (Maternity)
	Cornell University - Cornell Abroad	Education Abroad Coordinator
	EF Tours	Territory Manager/Account Manager
	Nativity Preparatory School of New Bedford	Teaching Fellow
	New England Center For Children	Teacher
	NYCDOE	School Aide
	Pearson Education	Test Scoring Evaluator
	The Greenwich Country Day School	Co-teacher
	The Gunnery	Foreign languages faculty
	The Lawrenceville School	Math Teaching Fellow
	University of Alberta	Teaching and Research Assistant
	University of Montana	Recruitment Specialist



# Sampling of Jobs

Industry	Company/Organization	Job Title
<b>Energy</b>	Altenex	Boston
<b>Environmental</b>	PurposeEnergy	Operations Specialist
	Alpine Watershed Group	Watershed Program Assistant
	Center For EcoTechnology	Marketing Fellow
	SoundWaters	Environmental Educator
<b>Fashion</b>	The Henry's Fork Foundation	Conservation Technition
<b>Finance/Banking</b>	Art Parner	Licensing Coordinator
	Angelo, Gordon & Co.	Marketing Analyst
	AXA Advisers	Financial Adviser
	Axis Trading Solutions	Associate
	Barclays	Analyst - Fixed Income Rates Trading
	BNY Mellon	Human Resource Client Service Representative
	Brown Brothers Harriman	Fund Accountant
	Canaras Capital Management	Junior Analyst
	Canaras Capital Management	Junior Analyst
	Christie's	
	Christie's Auction House	Communications Coordinator
	Engineers Gate LP	Execution Trader
	FBR & CO.	Sales Assistant
	Fidelity Investments	Financial Representative
	First Source Federal Credit Union	Financial Service Representative
	Fiscal Advisors & Marketing	Client Administrator
	Genereal Electric	Financial Management Program
	GFI Group	Junior Broker
	Goldman Sachs	Financial analyst
	J.P. Morgan	Sales Analyst
	Jean Paul Spa and Salons	Receptionist: Coordinator
	Legg Mason	Sales Services Associate
	Merrill Lynch	Financial Solutions Advisor
	Merrill Lynch Wealth Management	Financial Advisor
	Natixis Global Asset Management	Inbound Sales Representative
	The Carlyle Group	Junior Analyst
	Thomson Reuters	Client Specialist
<b>Food and Beverage</b>	Berkshire East Resort	Cook
	BLEU	Baker
<b>Government/Public Administration</b>	Bread Alone	Server
	Development Authority of the North Country	GIS Technician
	Office of Senator Collins	Paid, full-time intern
	Town of Hudson	Assistant, Finance and Treasury
	Air Force	2d Lt
<b>Health Care</b>	Banfield Pet Hospital	Veterinary Assistant
	Benefit Services Group	Account Executive Assistant
	Boston Children's Hospital	Patient Experience Representative
	Canton Potsdam Hospital	Clinical Research Coordinator
	Comfort Dental Green Mountain	Front Office
	Crouse Hospital	Anesthesia Technician
	Dana-Farber Cancer Institute	Research Coordinator
	Dartmouth Hitchcock Medical Center	Research Coordinator
	Downeast Eye, M.D.	Front Desk Manager
	Glens Falls Hospital	Behavioral Health Technician
	Hartford Hospital	Patient Care Associate
	Massachusetts General Hospital	Marketing Specialist
	Mount Sinai Hospital	Animal Care Technician
	Northern Dutchess Hospital	Medical/Surgical Patient Care Technician
	Penobscot Bay Medical Center	Medical assistant
	Press Ganey Associates	Inside sales executive

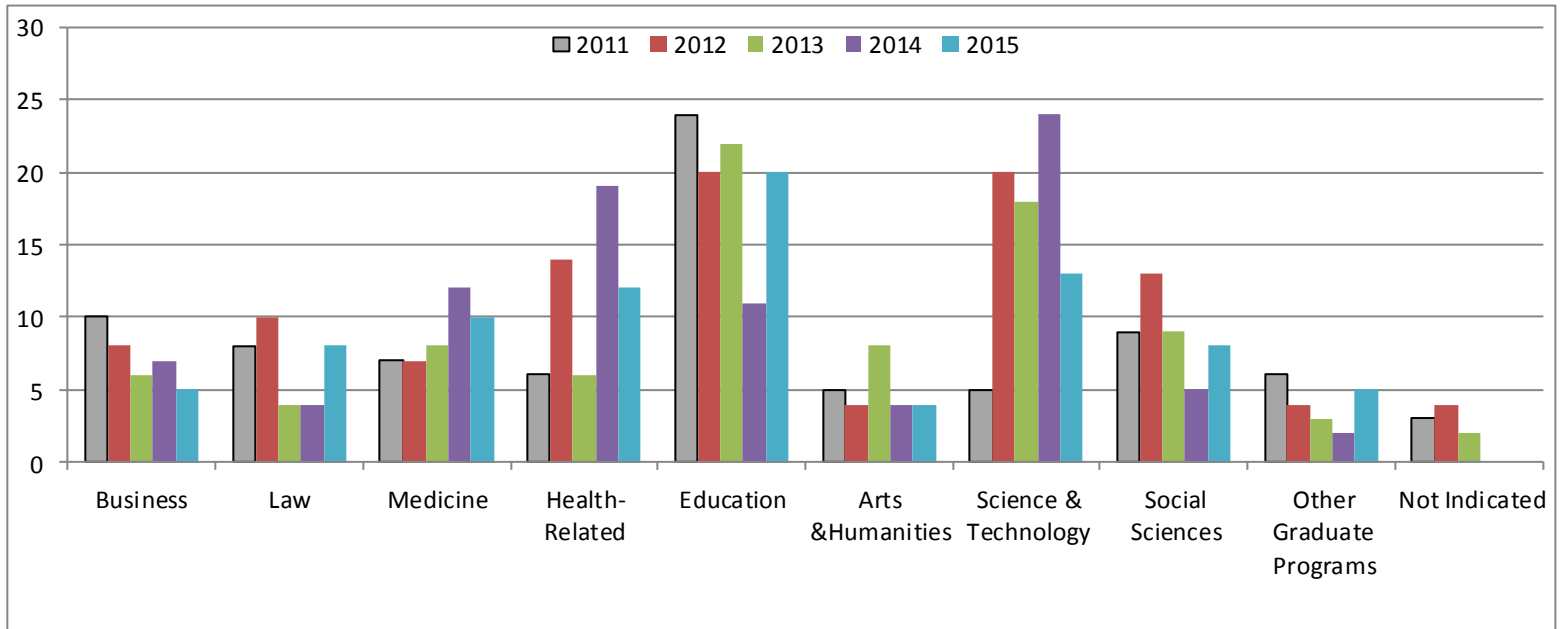
# Sampling of Jobs

Industry	Company/Organization	Job Title
<b>Hotel, Restaurant, Hospitality</b>	Common Man Family of Restaurants	Bartender/Server
	Hilton	Front Desk Associate
	Jackson Hole Mountain Resort	Assistant Manager at Jackson Hole Sports
	Sackets Harbor Brewing Company	Waitress/ Bartender
<b>Human Resources</b>	The Inn at Saratoga	Front Desk Associate
	New Balance Athletics	Bi-Lingual Account Services Representative
	Nigel Frank International	Recruitment Consultant
<b>Insurance</b>	AIG	Property Underwriter
	Northwestern Mutual	Assistant Financial Representative
<b>International Affairs and Development</b>	Permanent Mission of Paraguay to the United Nations	Official
<b>Legal</b>	Team Africa Rising	ESL Instructor
	Clements & Pineault, LLP	Paralegal/ Office Manager
	Friends Committee on National Legislation	Program Assistant for Peacebuilding Policy
	Krooth & Altman LLP	Paralegal
	Legal Assistance of Western NY	Americorp Vista Paralegal
<b>Marketing</b>	Paul, Weiss, Rifkind, Wharton & Garrison LLP	Litigation Paralegal
	360i	Associate Data Scientist
	4Site Interactive Studios	Interactive Content Producer
<b>Museums and Libraries</b>	Madison Children's Museum	Education Supervisor
	The Wild Center	Interpretive Naturalist
<b>Other</b>	Center for American Progress	Special Assistant, Development
	General Electric	Tax Compliance Analyst
	Hired Privately	Contractor
	Penfield Marine	Operations Analyst
<b>Print and Publishing</b>	Cider Mill Press Publishing Company	Publishing Administrator
	Integrated Corporate Relations	Associate
	People Making Good PR	Junior Publicist
<b>Public Relations</b>	Sunshine Sachs	PR assistant
	CBRE/New England	Brokerage Associate
	Empire Management	Commercial Real Estate
<b>Real Estate</b>	Empire Management Company	Commercial Leasing Representative
	Halstead Property	Receptionist
	JLL	Coordinator
	Battelle Memorial Institute	PCR Technician
<b>Research</b>	Cornell University	Technician I
	Geisel School of Medicine at Dartmouth	Research Assistant III
	Mathematica Policy Research	Systems Tech
	Vanderbilt University	Teaching Assistant/Researcher
	Shelburne Farms	Cheese making and Processing Assistant/ demo coordinator
<b>Retail/Wholesale</b>	Sperry Topsider	Merchandiser
	Uniqlo USA	Store Manager on Fifth Avenue
<b>Sciences</b>	Boston Scientific	Sales Operations Analyst
	Arc of Monroe	Employment Specialist
	Counseling Service of Addison County	Community Services Manager
	Elmcrest Children's Center	Youth Development Professional
	Essex County Youth Advocate Program	Intensive Family Coordinator
	Ramapo for Children	RamaYear staff member
	SD Associates	Behavioral interventionist
	The Aspen Institute	Administrative Assistant
<b>Sports and Recreation</b>	Crystal Mountan Ski School	Ski Instructor
	Jackson Hole Mountain Resort	Mountain Sports School Sales Associate
	Killington mountain school	U16 men's alpine coach

# Sampling of Jobs

Industry	Company/Organization	Job Title
<b>Staffing and Executive Search</b>	Crewforce Heierick & Struggles Hudson Robert Half Legal Russell Reynolds Associates	Office Assistant Recruiter Jr. Recruiter Legal Assistant Analyst
<b>Technology</b>	Talener Appneta Atrion Cgi Federal Cloudhop.it Cvent DBC Pri-Med, LLC Dealer.com Epic Systems Eze Software Group HeartFlow, Inc. IVY Nigel Frank International Placester Qualtrics Technology for Tomorrow Vermont Information Processing Vision Critical WorldApp, Inc Yesware	Relationship Manager Business Development Representative Service Delivery Coordinator Consultant Cloud Support Consultant Special Products Team- Sales Associate Sales Executive Digital Advisor Quality Assurance Systems Support Analyst Software Engineer in Test Events Coordinator Recruitment consultant Business Development Manager, Corporate Strategy Program Manager QC Software Programmer Business Development Associate Sales Engineer Sales Development Representative Specials Events Manager Management Trainee
Telecommunications Transportation	Boulder County Communications Enterprise Rent-A-Car	

# Graduate/Professional School Attendance



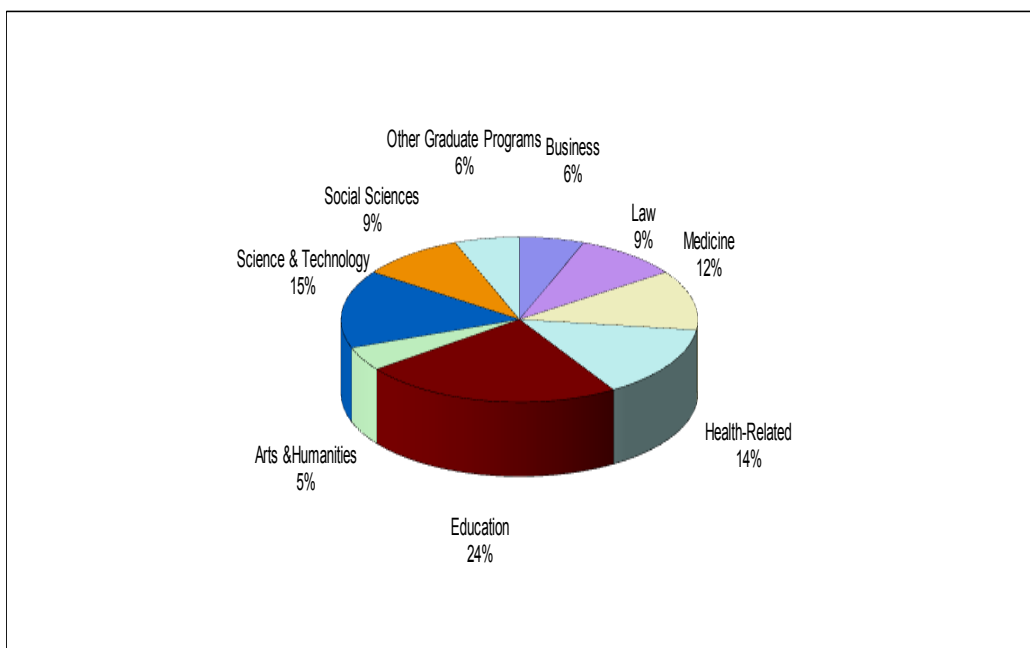
Program Type	2015	2014	2013	2012	2011
Arts & Humanities	4	4	8	4	5
Business	5	7	6	8	10
Education	20	11	22	20	23
Health-Related	12	19	6	14	5
Law	8	4	4	10	8
Medicine/Dentistry/Pharmacy/Veterinary	10	12	8	7	7
Science & Technology	13	24	18	20	5
Social Sciences	8	5	9	13	9
Other Graduate Programs	5	2	3	4	4
Not Indicated	0	0	2	4	3
<b>Total Graduate/Professional School</b>	<b>85</b>	<b>88</b>	<b>86</b>	<b>104</b>	<b>79</b>
<b>*Percentage of class attending graduate/ professional school</b>	<b>19.1%</b>	<b>20.7%</b>	<b>20.0%</b>	<b>24.2%</b>	<b>19.4%</b>

\*Total percentage of class attending graduate/professional school as primary and secondary function.

# Graduate/Professional School Programs

<u>Graduate Program Type</u>	<u>Number Attending</u>	<u>% of Attending</u>
Education	20	23.5%
Science & Technology	13	15.3%
Health-Related	12	14.1%
Medicine/Dentistry/Pharmacy/Veterinary	10	11.8%
Social Sciences	8	9.4%
Law	8	9.4%
Business	5	5.9%
Arts & Humanities	4	4.7%
Other Graduate Programs	5	5.9%
Not Indicated	0	0.0%
<b>Total Graduate/Professional School</b>	<b>85</b>	<b>100%</b>

\*\*Based on all full-time and part-time graduate school attendance.



\*Total percentage of class attending graduate/professional school as primary and secondary function.

# Graduate/Professional School Acceptance Rates

Graduate Program Type	# Students who Applied <sup>1</sup>	# Accepted to one or more schools	Acceptance Rate
Business	7	7	100.0%
Law	9	8	88.9%
Medicine/Dentistry/Pharmacy/Veterinary	11	10	90.9%
Education	20	19	95.0%
Other Masters Programs	32	32	100.0%
Doctoral Programs	14	10	71.4%
Other Professional Fields (BSN, etc.)	7	7	100.0%
<b>Total Applicants (unduplicated count)</b>	<b>94</b>	<b>90</b>	<b>95.7%</b>

# Sampling of Graduate Programs

	<b>Name of School</b>	<b>Program</b>	<b>Degree</b>
Arts & Humanities	Chapman University	Creative Writing	MFA
	Indiana University	Creative writing - Fiction	MFA
	University of Georgia	Painting & Drawing	MFA
Business	Northeastern University	Accounting and MBA	MA and MS
	Clarkson University	Innovation and New Venture Management	MBA
Education	Alfred University	School Psychology	Doctorate
	Syracuse university	Instructional Design, Development, and Evaluation	MS
	Teacher's College, Columbia University	History and Education	MA
Health-Related	Clarkson University	Physicians Assistant	Masters
	University of Connecticut	Doctor of Physical Therapy	DPT
Law	Boston College Law School	Law	JD
	Georgetown University Law Center	Law	JD
	Osgoode Hall Law School - York University	Law	JD
Medicine/Dentistry/ Pharmacy/Veterinary	University of Vermont College of Medicine	Doctor of Medicine	MD
	SUNY Upstate Medical University	Medical School	MD
	Ross University School of Veterinary Medicine	Veterinary medicine	DVM
Science & Technology	Tarleton State University	Mathematics-Data Mining	MS
	University of Vermont	Applied Mathematics	MS
	University of Washington	Chemistry	PhD
Social Sciences	Boston University	Global Development Policy	MA
	University at Albany	Social Work (MSW) and Criminal Justice (MA)	MSW, MA
	University of New England	Masters of Social Work	MSW

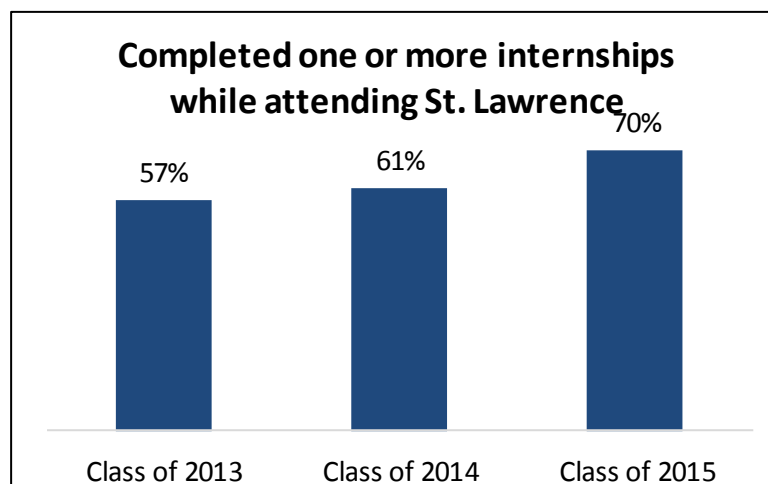
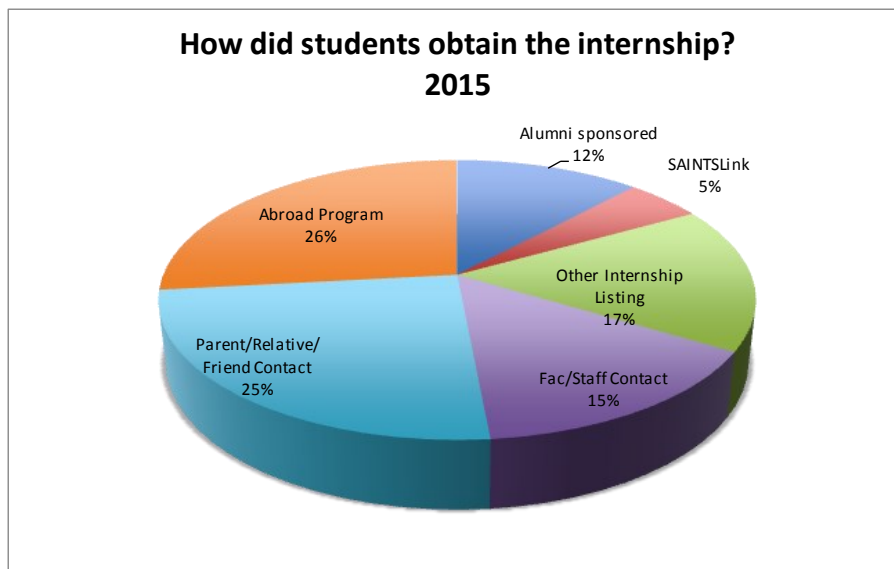
# Internships

## Number of Respondents who Completed Internships

Of the 437 respondents to this question, 305 individuals (69.8%) reported that they had completed at least one internship. This represents a 9.3% increase from the Class of 2014, which was 60.5%. It is also a 30.3% increase from the Class of 2009, in which 39.5% of respondents to the question had completed at least one internship.

The average number of internships per student was 1.44 for members of the Class of 2015.

The full breakdown of the number of internships per student for the Class of 2015 is: 151 respondents (50%) completed one internship, 74 (24%) completed two, 33 (11%) completed three, 5 (2%) completed four, and 4 (1%) completed five. Students completed a total of 438 internships, up from 349 for the Class of 2014.





# Sampling of Internships

4H Camp Overlook  
Aaron Woolf for Congress Campaign  
Acadia Mountain Guides  
Actor's Theatre Workshop  
Adirondack Semester  
Admissions Ambassador  
AECOM Dubai  
Africa Yoga Project  
AIG  
Albany Medical College  
Altenex  
American Councils for International Education  
American Diabetes Association  
American Express  
American Red Cross  
Amsterdam News  
Analyst, Goldman Sachs  
Angelo Gordon & Co.  
Annex Sports Performance  
Anthem Marketing Solution  
Archaeological Field Assistant  
Archehos Capital Management  
Arise & Shine Uganda  
Associates in Periodontics  
Attain Therapy & Fitness  
Auburn Memorial Hospital  
B Public Relations  
B3 Creative  
Bank of Canada  
Barclays Bank Tanzania  
Beth Israel Deaconess Medical Center  
Bethlehem Central School  
Bhutanese Refugee Camps  
Biosphere Foundation  
BlinkNow  
Bloomsbury Publishing  
Blue Elephant Theater  
BluePoint Venture Marketing  
Boast USA  
BOCES  
BOMA Project  
Boston Children's Hospital  
Boston Scientific  
BPAS Actuarial & Pension Services  
Broadcasting Board of Governors  
Buen Sabor  
Cabinet of the President of Macedonia  
Canaras Capital  
Canaras Capital Management  
Canidae  
Canton Central Schools  
Canton District Attorney  
Canton Head Start  
Canton Middle School  
Canton Town Historian's Office  
Canton-Potsdam Hospital  
Cantor Fitzgerald  
Career Services  
Carlton Books International Sales Intern  
CBRE/New England  
Central Park Conservancy  
Cercone Brown Company  
Christie's Auction House  
CIEE  
Clear Harbor Asset Management  
Comcast Corporation  
Congressman Paul Tonko  
Consortium on Gender, Security, and Human Rights  
Cornell Cooperative Extension  
Couture Fashion  
CPEX Real Estate  
CPH  
Credit Suisse  
Criterion Holding LLC  
Cummings Properties  
Curley Company  
D3 Creative  
Dana-Farber Cancer Institute  
Darrin Fresh Water Institute of RPI  
Dartmouth Hitchcock Medical Center  
Delta Engineers Business Development Intern  
Department of Justice  
Department of Social Services  
DK/Penguin Publishing  
Don Buchwald and Associates  
DOSS St. Lawrence County  
DoubleTree by Hilton Cariari  
Dowse and Co. Solicitors (London, UK)  
EBSCO  
École d'Improvisation de Jazz de Mont-Saint-Aignan  
Ed Markey for Senate Campaign  
Elementary School in France  
Ellis Island Docent  
Embassy of the Hashemite Kingdom of Jordan  
Emerald Necklace Conservancy  
Engineers Gate LP

# Sampling of Internships

Environment America  
Erie County DA's Office  
ESC Human Resource Outsourcing  
ESPN  
Essex Farm Institute  
Estee Lauder Companies  
Excel Partners Securities  
Farm Sanctuary  
Fidelity Center for Applied Technology  
Fidelity Investments  
Fiscal Advisors & Marketing  
Fort Drum Regional Health Planning Organization  
Fortress Investment Group  
Fox 29 Philadelphia  
France Program Internship  
Friends of Congo  
Fulham & Company  
Furino and Hamlin Orthodontics  
GE Africa  
GE Capital  
Gillibrand for Senate  
Good Wife  
Green Village Initiative  
Greenwood Wildlife Rehabilitation  
Harbridge Consulting Group  
Hartland  
Hawk Mountain Sanctuary  
Hearst  
Hewlett-Packard  
Hill Holliday  
HMI  
Hochstein School of Music and Dance  
Hoose, Knight and Associates  
Hudson Institute  
Human Rights Campaign  
Hunt Real Estate  
IMG academy  
Independent Summer Research  
International Association of Chiefs of Police  
International Center for Religion and Diplomacy  
International Centre for Parliamentary Studies  
J Mark Erickson Fellowship  
J Walter Thompson  
Jack Morton Worldwide  
Johns Hopkins  
Ladders for Leaders  
Lakeside School  
Lakeside School  
Landmark Management  
Latin American Research Review  
Law Offices of Maloney and Mohsen  
Legal Services of Hudson Valley  
Legg Mason  
Macmillan Publishing  
Mark Hampton  
Mathematica Policy Research  
Mayor Thames Festival  
Merrill Lynch  
Mesirow Financial Inc.  
Messenger Post  
Michael Robert's Associates  
Midtown Athletic Club  
Millioneiress  
MIND in Camden, London  
Mirror Lake Chiropractic  
Moi Teaching and Referral Hospital  
MOJO Magazine  
Morgan Stanley  
Mpala Research Centre  
National Historical Commission of the Philippines  
National Trust  
Natixis Global Asset Management  
Nature Up North  
NCPR  
New Jersey Conservation Foundation  
New York Observer  
New York State Department of Education  
NextStop  
Nigerian Institute of Social and Economic Research  
Noblis  
Northfield Mount Hermon Summer Session  
Northwestern Mutual  
NY6  
NYS Military Museum  
Office of Congressman Paul Tonko  
Office of Rep. Tom Reed (NY-23)  
Office of Senator Kirsten Gillibrand  
Office of University Advancement  
Ogdensburg Free Academy  
Okanagan Similkameen Stewardship Society  
Onondaga County District Attorney's Office  
OSSS- Sarah Ashpole  
Oughton Limited  
Palmetto Medical Initiative  
Peace First

# Sampling of Internships

Quebec Labrador Foundation  
Quiksilver  
Raymond James  
Renegade Writers Collaborative  
REU at Bucknell University  
REU at Idaho State University  
Rice Energy  
RiverStone  
Rock Ridge Music  
Rose Hill Adolescent Drug Rehab Center  
Rose Hill Rehabilitation  
Roulston Research  
Royal Thai Embassy Consular Office  
Russell Reynolds Associates  
Rutgers School of Dental Medicine: Gateway to Dentistry  
Saatchi & Saatchi  
Sage Science  
SAP - Management Consulting  
SAP SE  
Save the Children  
Saveur Magazine  
Seeway Tanzania  
Shadow a Saint  
Shadowing with Westchester Children's Museum  
SHIFT Communications  
Shriver House Museum  
Simon Lee Gallery - NYC  
Sindhi American Political Action Committee  
Slum Aid Project  
Smithsonian's National Museum of Natural History  
Soft Power Education  
Soho contemporary art  
Sony Music  
Southridge Partners  
Spanfeller Media Group  
Spark Ventures  
Sports Illustrated  
SRM Consulting  
St Paul's School Advanced Studies Program  
St. John Fisher Athletic Department  
Lakeside School  
Landmark Management  
Latin American Research Review  
Law Offices of Maloney and Mohsen  
Legal Services of Hudson Valley  
Legg Mason  
Stanwich Advisors  
Starpower  
State Street Corporation  
Summit Golf Brands  
SUNY Upstate  
Sustainability Semester Internship  
Sweetser  
TAUNY  
TeachAbroad Thailand  
Teacher Assistant in Denmark  
TESOL  
Teton Science Schools  
Thames Festival  
The Adirondack Wildlife Refuge  
The Aspen Institute  
The BOMA Project  
The Carlyle Group  
The Carter Center  
The Collaborative Companies  
The Fantastical  
The October Gallery  
The Post-Standard/Syracuse.com  
The Weave  
The Weave Blog  
The Wild Center  
The Winchester Project  
The World Bank  
Thebault Design  
Thomas Morgan Films  
Towers Watson  
Town and Village of Canton  
Trilogy Athletes  
Truck Safety Coalition  
Tumaini La Maisha  
Turtlewings Nonprofit  
U.S. House of Representatives  
United States Senate  
University at Albany Summer Research Program  
University Communications  
University of North Carolina Institute of Marine Sciences  
University of Pittsburgh  
US International Trade Commission  
Windham Capital Management  
Wolters Kluwer Financial Services  
Woods Hole Oceanographic Institution  
Worldview Entertainment