

# Momentum St. Lawrence Celebration in February

See Back Page for Plans

## Thank You All!

# MOMENTUM

A CAMPAIGN REPORT FROM ST. LAWRENCE UNIVERSITY

JANUARY 2011

## Momentum St. Lawrence Concludes With High Impact

Momentum St. Lawrence ended on December 31, 2010; final results will be announced at a campaign celebration on February 25-26, 2011. The campaign was officially launched in 2003, with a goal of \$200 million.

winning Johnson Hall of Science and Sullivan Student Center to the recently unveiled Peterson-Kermani Performance Hall and North Country Field/Hall-Leet Stadium.

21st century and beyond.

“The Momentum St. Lawrence Campaign persevered through the recession starting in 2008, transforming the way students, faculty and staff live and learn at the University in fundamental and important ways,” says Vice President for University Advancement Michael P. Archibald. “The vast majority of campaign objectives were met, including support for facilities, the St. Lawrence Fund, new academic programs and bequest commitments, to name a few. Although we realized that the \$200 million goal could not be achieved in the financial environment of recent years, we are profoundly grateful for the support we have received.

“This campaign started January 1, 2003, the day after the last one, Campaign St. Lawrence, was completed,” Archibald

*Continued on page 16*

***“This is an extraordinary achievement, and the campus community is forever grateful to our loyal supporters.”***

Gifts to the largest campaign in St. Lawrence history have provided important resources in all areas of University life:

- They have elevated the University’s endowment, making it possible to provide more professorships, scholarships and University Fellowships.
- They have fueled renovations to and the addition of critical facilities, from the award-

- They have bolstered the St. Lawrence Fund.

They have done much more, as will be demonstrated at a celebration on February 25-26, 2011 (see the back page for details), and chronicled in the next issue of this newsletter. But most important, gifts to Momentum St. Lawrence have placed teaching and learning at St. Lawrence on a path calculated to address the needs of society in the



## New York City Semester in Planning Stages

St. Lawrence has 17 international study programs on five continents. It offers three distinct domestic off-campus academic programs, ranging from the Adirondack wilderness to the halls of the U.S. Capitol.

Now, the University is planning to add to that list a program in the nation’s largest metropolis. The New York City Semester, focusing on two arenas in which that city is a worldwide hub, business and the arts, aims to enroll students for the first time in the Spring 2012 semester.

“One of St. Lawrence’s challenges, though in other ways an asset, is its location far from major business and

*Continued on page 14*



President Bill Fox '75 and Karen Kermani Peterson stand proudly by the Peterson-Kermani Performance Hall plaque moments after they unveiled it at dedication ceremonies last October 22.

## Dedication Month 2010 Four New Facilities Dedicated in October

October 2010 could legitimately have been labeled Dedication Month at St. Lawrence. Culminating with the dedication of the spectacular Peterson-Kermani Performance Hall in Griffiths Arts Center on October 22, four diverse and exciting new facilities, spanning the arts and athletics, were dedicated during the month. Leading up to the ceremonies in

Peterson-Kermani were the dedications of:

- New space for Java performances and KSLU radio station, on October 21.
- Stratford Football Locker Room, memorializing the late Ted “Bear” Stratford '57, on October 2.

*Continued on page 6*



**David Peets '14 and Meghan Smith '14, St. Lawrence's newest Hearst Scholars.**

## Hearst Scholarship Addition to Assist Two Students

Thanks to a generous grant from the William Randolph Hearst Foundation, St. Lawrence is now able to support the education of two Native American or North Country students each academic year. The grant enhances the already existing William Randolph Hearst Scholarship fund which, since its establishment in 1991, has provided 18 scholarship awards.

The Hearst Scholarship's newest recipients, Meghan Smith and David Peets, both North Country residents of the Class of 2014, are being supported during the current academic year. Both recipients were nominated by SLU personnel based on the fund's criteria: Native American heritage or North Country residency.

Smith, a native of Fort Covington, N.Y., admits that she was convinced the University had the wrong person when they notified her of the award. "I hadn't heard anything about the scholarship before," she says. She admits the gratitude set in after another e-mail informed her it was indeed intended for her, though it hasn't quite sunk in yet as to how it will affect her opportunities at St. Lawrence.

Though only a first-year student, Smith is already reaping the rewards of her liberal arts education, claiming the "wide variety of options" has already influenced her plans for post-SLU life. Smith would like a career based around children, though in what

specific area she has not, as befits a liberal arts education, decided.

Massena, N.Y., resident David Peets will also benefit from the grant provided by the Hearst Foundation, and expressed his gratitude toward the University shortly after being notified. "I'm glad the University has these funds that make it possible for students like me to be able to come here," he says. "Every little bit helps." Peets is considering a major in economics, and possibly a minor in math.

President William L. Fox '75 added his gratitude, saying, "I know of no more effective way to change lives for the better than by increasing access to education, and that is what the William Randolph

Hearst Foundation has helped do for our students. I thank it for assisting St. Lawrence by strengthening our ability to provide students affordable access to a high-quality, private education. We are most grateful for this support."

The charitable goals of the William Randolph Hearst Foundation reflect the philanthropic interests of founder William Randolph Hearst: education, health, social service and culture. Within these four areas, the foundation assists institutions in providing opportunities to underserved and underrepresented populations.

— Beth Spadaccini '11

# The Cost of Conducting Science in the 21st Century

**T**raining the next generation of science researchers is an expensive enterprise. There are the obvious and necessary expenses, such as acquiring new equipment, replacing outdated equipment, updating software, and purchasing laboratory supplies and materials.

But that's not all. There are also hidden expenses that are becoming harder and harder to cover: service contract costs.

To acquire state-of-the-art scientific equipment and ensure reliable, continuous operation, scientists must keep service contracts in place to cover any machine malfunctions or breakdowns. In-house repairs are rarely possible, and on any individual scientific tool, the service contract is likely to cost \$3,000 to \$7,000 annually, sometimes more. On an annual basis, the price of keeping our existing service contracts in place costs the University about \$110,000 a year. If the University acquires new instruments in the next year, those costs are likely to go up by \$10,000 to \$20,000.

Over the last few years, the University has raised significant funds, primarily through grants, to purchase new equipment to help students train for advanced study or careers in the sciences by giving them direct experience with modern equipment and

instrumentation used by professional scientists. However, it is becoming harder and harder to cover the service contract costs, thanks to rising prices and fewer opportunities to cover these costs through grant awards.

The departments of geology, biology and physics are enjoying the use of new scientific instruments – including a scanning electron microscope (SEM) and an x-ray diffraction (XRD) system – purchased with grants from the National Science Foundation, the George I. Alden Trust and the J.M. McDonald Foundation. The initial contract service period on both instruments has been provided by the manufacturers at no cost to the University, but in the next year, we will need to identify how to incorporate the costs of these contracts into the University's operational budget longer-term.

These items, which are used by over a dozen faculty and 220 students annually, are just two of many instruments across the science departments that require service contracts. If you would like to make a gift to help cover these costs that are essential to teaching modern science, please contact Andy Whittier at [awhittier@stlawu.edu](mailto:awhittier@stlawu.edu). If you have access to a corporate grant program through your employer, please contact Devon Murphy Stein, [dstein@stlawu.edu](mailto:dstein@stlawu.edu).



*Microscopy Technician Jill Pflugheber '86, right, and Kristin Harrington '10, who majored in neuroscience, pursue research on the University's scanning electron microscope (SEM).*



*Last spring, Jeffrey Chiarenzelli '81, associate professor of geology, right, and David Mosher '10, now a graduate student at RPI, employed the x-ray diffraction (XRD) system to study a trace of a shale sample. "The x-ray diffractometer allows us to determine whether a substance is crystalline, and if it is, what minerals or compounds it is made of," Chiarenzelli explained.*



*As this issue went to press, the department of chemistry submitted a proposal to the National Science Foundation seeking a new Nuclear Magnetic Resonance (NMR) spectrometer to support faculty/undergraduate research and research training. Pictured are Baker Professor and Chair of Chemistry Larry French and chemistry major Alyssa Pirinelli '10 working on the existing device. The instrument will be used in three upper-division chemistry courses and to carry out research in organic, inorganic, physical and environmental chemistry. The NMR spectrometer will also facilitate the culminating capstone experiences of many students and fulfill our responsibility to train our science students on modern scientific equipment. The service contract costs are expected to be \$15,000 to \$17,000 annually.*

# Selected Gifts and Commitments to Momentum St. Lawrence

**David C. Areson '71** made a gift of \$17,967 to the Nicole M. & David C. Areson '71 Scholarship and a gift of \$5,000 to the St. Lawrence Fund. David is an active volunteer on a number of fund-raising committees.

**The Cantor Fitzgerald Relief Fund** made a gift of \$50,000 to the St. Lawrence University September 11, 2001 Alumni Scholarship. This grant proposal was organized by Chris Gibson '91, who helped establish the scholarship and works at Cantor Fitzgerald in Boston. For details, see the story on page 10.

**Suzanne E. Douglas** pledged \$160,000 of her estate to go to the Cecil Munroe Douglas '31 Endowed Scholarship in memory of her father.

**The William Randolph Hearst Foundation, Inc.** made a gift of \$250,000 to the William Randolph Hearst Endowed Scholarship Fund for Native American and North Country Students. For more, see the article on page 2.

**North Country Savings Bank** (Canton, N.Y.) has pledged \$5,000 to support the participation of a team of economics students in the annual College Fed Challenge. This program is an undergraduate college competition that helps students learn about the U.S. macro-economy, the Federal Reserve System and the implementation of monetary policy and financial stability.

**The Northern New York Library Network** awarded St. Lawrence a \$14,000 Technology Service Improvement Grant to enhance digitization capabilities and access to research resources at the University's two libraries.

**Helen D. Richter '41**, widow of Gilbert K. Richter '41, and their daughter, Linda Anderson, made a gift of \$10,000 to establish a fund in his name.

**Carolyn C. Roberts** made a gift of \$9,246 to the James R. Collins Memorial Scholarship, which brings the total value of this scholarship to nearly \$100,000. This scholarship was established by Carolyn in memory of her brother, Class of 1950, who passed away in October 2003.

**Neil C. Sammis '74** facilitated a gift of \$10,000 in honor of retired men's lacrosse coach Don Leet and in recognition of the new Hall-Leet Stadium.

**Charles N. '84 and Anni Santry** made a major gift of \$25,000 toward North Country Field and Hall-Leet Stadium. Charles also encouraged other former athletes to give and to return to campus for the honoring of Coaches Don Leet and Dotty Hall and the dedication of the new stadium (see page 7).

**Mark A. Westcott '82** made a gift of \$15,000 to the Randall G. Williams '82 Endowed Scholarship. This scholarship was established in 2008 in memory of Randy Williams, who passed away in 2002. The scholarship is to be awarded to students from Clinton County in New York State.

**Christopher P. Yoshida '00** made a gift of \$20,516 to the St. Lawrence Fund, continuing his longstanding commitment to leadership support of St. Lawrence.

*As evidenced by the accompanying presentation of recent examples, a great many gifts to the University support scholarships that help provide higher education to deserving students, a major thrust of Momentum St. Lawrence.*



# “Renaissance Man” Bill Hazen '47's Bequest Benefits Campus Life, from Sciences to Arts

“A true renaissance man,” his students called him, a scholar with broad knowledge of languages and classics and an appreciation for art whose career in biology included the publication of one of the best-selling textbooks on ecology in the late 1960s: *Readings in Population and Community Ecology*.

William Hazen '47 had a life filled with accomplishments; he passed away on March 3, 2010, but his legacy at St. Lawrence will continue as a result of his generous bequests.

Bill grew up on a farm near Canton, where his father, who read Greek and Latin, encouraged him to strive for academic achievement. He attended St. Lawrence, but his studies were interrupted by military service during World War II, during which he served as a Japanese interpreter. After the war he completed his undergraduate degree, later earning a Ph.D. in zoology from the University of Michigan. He taught first at the University of Chicago, then at San Diego State University, where he spent a productive career. Dedicated to his students, Bill was known for challenging them intellectually as well as taking them under his wing.



Over the years, Bill was a conscientious donor to St. Lawrence. In addition to his regular annual giving, he donated some pieces from his art collection to Brush Gallery, and during his lifetime he established several charitable remainder trusts and charitable gift annuities with St. Lawrence as remainder beneficiary. Always a strong advocate for the sciences,

Bill set up the William E. Hazen Scientific Journals Subscription Fund, which he contributed to regularly throughout his lifetime and added to from his estate.

When Bill passed away, the majority of his estate came to St. Lawrence, the institution that meant so much to him and that he had been so pleased to see thriving. Bill's estate provided gifts for biological sciences, the scientific journal fund, and a substantial portion unrestricted. In addition, Bill left his art collection to St. Lawrence, for teaching purposes.

Bill Hazen's tremendous generosity meant that St. Lawrence received more than \$1 million after his passing. His memory lives on at St. Lawrence as a result of his generous giving.



*Eugenio Sierra Ràfols (Spanish, 1919-1999)  
Untitled, n.d.  
Gouache on paper, 20 x 12 in.*

**One of the works of art Bill Hazen donated to St. Lawrence during his lifetime.**

*Bill Hazen's tremendous generosity meant that St. Lawrence received more than \$1 million after his passing.*

# Dedication Month 2010

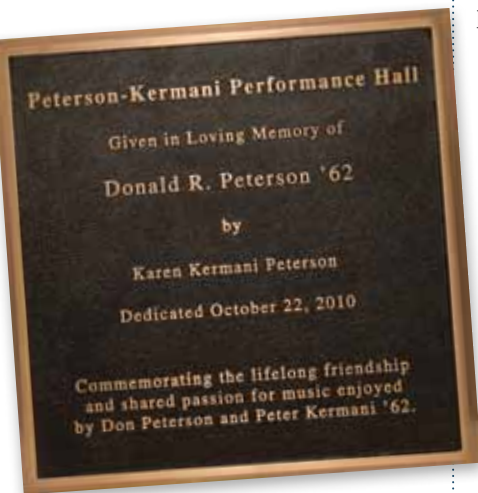
Continued from page 1

- The renovated North Country Field, the artificial-turf field used primarily for field hockey and lacrosse, and the new Hall-Leet Stadium, honoring two long-time University coaches, Dotty Hall and Don Leet, on October 1.

## The Arts Facilities

Both arts facilities dedications took place during Trustee Weekend. Most of the work was financed through gifts and grants.

**Peterson-Kermani Performance Hall** was dedicated with a concert on October 22. The 19,000-square-foot space, with seating space for about 200, was made possible by a gift of \$1.75 million from Karen Kermani Peterson, widow of Don Peterson '62. It commemorates the lifelong friendship and shared passion for music enjoyed by Don Peterson and Karen Kermani Peterson's brother, Peter Kermani '62.



making a gift that allowed us to carry out our vision," said President Bill Fox '75 at the dedication. He added, "Our former Gilbert Recital Hall, named in honor of former Professor of Music J. Richard Gilbert, also played an important role in our progression in music performance. We remember Professor Gilbert with a new plaque on the wall just outside these doors."

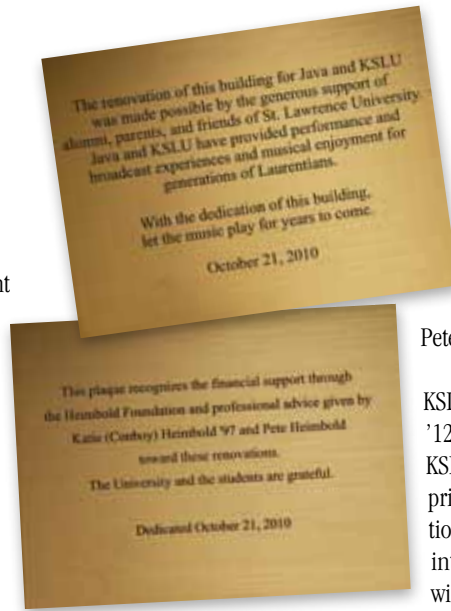
Laurentian Singers President Sam Gradess '11 credited the hall with helping the Singers develop "a new level of professionalism and artanship through our performances. It is amazing to feel so engrossed in the pieces and to see the audience in a way that makes us feel that much more connected with them through our music," he said. "This recital hall will serve as a constant reminder that the University cares to see that we thrive here in the arts, and it will be seen as an incentive for prospective arts students for many years to come."

The first half of the dedication concert featured compositions and performances by St. Lawrence music faculty and students: "Detour," by Christopher Watts, performed by Watts and David Henderson; "Elysian Fields," by Michael Farley; and "Arirang," by In-Sil Yoo, performed by the Laurentian Singers, directed by Barry Torres, with Haley Feickert '11 as soloist. A program of contemporary Mexican music, performed by Jonathan Golove on cello and Stephen Manes on piano, comprised the second half of the program.

The dedication ceremony for *Java's performance space* and *KSLU*, on October 21, was followed by a free concert by the MacPodz, a guitar-less five-piece band who offer a grab-bag of musical styles,

Nocturnals, which formed on campus and performed in an earlier incarnation of Java; Richard "Sparky" Potter '70; and Katie Conboy Heimbold '97 and Pete Heimbold, who performs as Pete Francis.

Speaking at the ceremonies, KSLU President Kurt Malkames '12 said, "With this new space, KSLU will be able to serve our primary mission as an educational organization for those interested in communications. It will no doubt be a space that



At the dedication of the new KSLU/Java space, Kurt Malkames '12, center, KSLU president, and James Racette '12, president of Java, unveil the plaque while President Fox speaks.

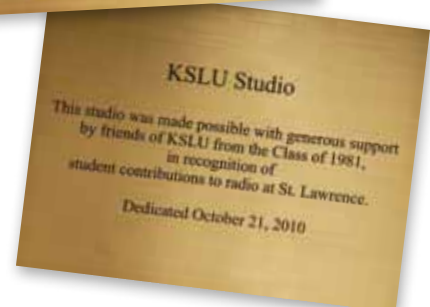


from jazz to rootsy jam-band-style grooves, and tours of the project.

The new Java/KSLU space is located near Brown Hall; the Java House residential theme cottage remains on University Avenue. Java occupies about 2,800 square feet, with KSLU facilities commanding about 840 square feet in the new space.

Java and KSLU have provided performance and broadcast experience for generations of St. Lawrence students; KSLU, formerly WCAD, is the second-oldest student-run radio station in America. The renovation of the space as their new locations was made possible through the support of alumni, parents and friends of the University. Professional advice and consultation was provided by Matt Burr '03 and Grace Potter '06, of the band Grace Potter and the

many future generations of KSLU airstaff can learn from and call home." Chair of the Board of Trustees Don Rose '64 added, "Both organizations reflect what we feel is central to our mission here: providing financially sound and prudent avenues for students to



The project is part of a larger renovation of Griffiths Arts Center, which includes a new exterior, the performance hall, classrooms, studios and faculty offices.

"The vision for this performance hall was always there, but it became a reality when Karen Peterson decided to honor her late husband, Don Peterson '62, by

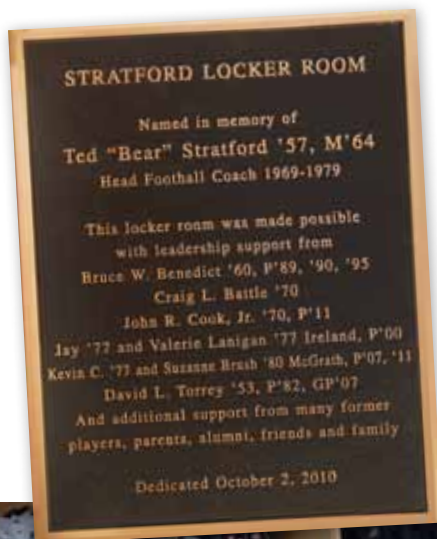
learn both in and out of the classroom. Java and KSLU support the strategic priority of strengthening the arts, from both academic and student life perspectives.”

Acknowledging the histories of the two organizations, President Fox said, “We should not move forward without thinking about those past student leaders who worked so hard on KSLU and Java. Students made these two institutions of the University, and it is because of students, alumni and parents that we are able to have these new facilities.”

### The Sports Facilities

Both sports facilities dedications took place during Family Weekend. All of the construction for the sports projects was financed through gifts and grants.

The new *Stratford Football Locker Room* features renovated facilities; new lockers for each player; distinct simultaneous meeting spaces for both offensive and defensive units; better air handling and circulation;



Jay Ireland '77, P'00

and more overall space.

Ted Stratford '57, M'64 played football at St. Lawrence and returned to his alma mater as head wrestling coach in 1967, becoming head football coach in 1969. He established the St. Lawrence record for football coaching victories during a 10-season career, compiling a 64-25 career record; his 1976 team won the first NCAA playoff game in St. Lawrence football history. As wrestling coach, he took the 1970 and 1971 teams to ICAC championships and a 16-3 record in dual meets. After retiring from coaching, he was a middle-school science teacher and coach in Saranac Lake, N.Y., until his death in December 2006. He is a member of the SLU Athletic Hall of Fame.

At the morning dedication on the Saturday of Family Weekend, President Fox noted that “Athletics have always played an important role in education at SLU. They are part of the liberal arts.” The new locker room, he added, “provides our football student-athletes with a top-notch facility.”

Other speakers included new Head Football Coach Mark Raymond M'96; Trustee Jay Ireland '77, P'00 (pictured), who played football for Stratford; and Greg Stratford P'13, son of Coach Stratford. Major donors to the project include Bruce W. Benedict '60, P'89, '90, '95; Craig L. Battle '70; and others.

Upon conclusion of the ceremonies, the football team suited up in their new locker room, a facility the players said inspired greater camaraderie; charged onto Weeks Field; and beat Hobart 24-21, on their way to the eventual Liberty League championship and a berth in the NCAA Division III post-season tournament for the first time since 1982.

In addition to replacement of the turf on *North Country Field*, that project

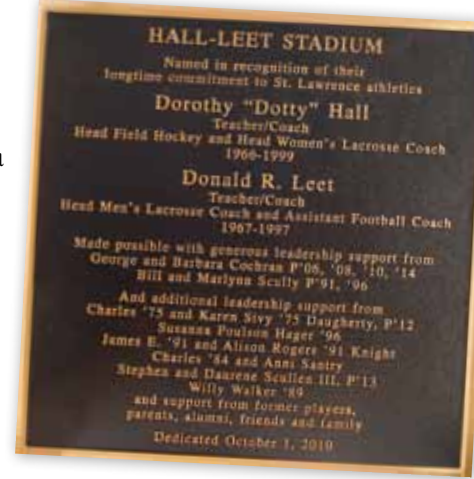
included a new stadium entrance, a pair of stone-and-brick gates, and a fencing system. Generous support for the project came from trustee George and Barbara Cochran, P'06, '08, '10, '14; Bill and Marlynn Scully, P'91, '96; and many others.

### Hall-Leet Stadium

honors two coaches who served SLU for a cumulative 60+ years and were elected to the St. Lawrence Athletic Hall of Fame.

Dotty Hall, professor emerita of sport and leisure studies, began her coaching and teaching career at St. Lawrence in 1966, serving continuously until her retirement in 2000. She was chair of the women's athletic department from 1968 until the women's and men's programs merged in 1974, serving from then until she announced her retirement as the National Collegiate Athletic Association (NCAA) women's senior administrator. She coached field hockey, women's tennis and women's lacrosse, and is the author of the 2007 book *Women's Sports at St. Lawrence University: From Beginnings to Title IX*.

Don Leet's coaching career spanned nearly 30 years, with 251 career victories in lacrosse and participation in eight NCAA tournaments. He was the United States Intercollegiate Lacrosse Association Man of the Year for 1997 and the 1979 NCAA Coach of the Year. Leet was only the third Division III coach in history to be the head coach of the North-South Game. He produced 35 All-Americans in lacrosse and coached three as defensive line coach in football.



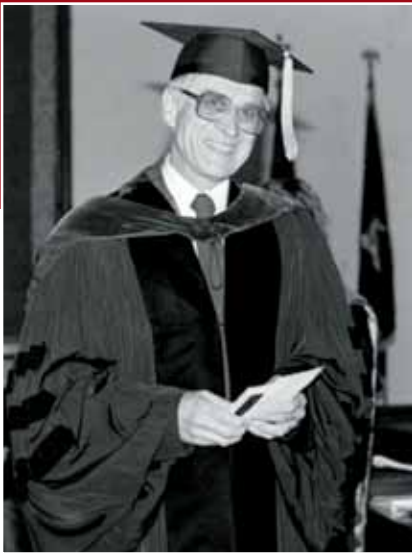
Dedication speakers included current head men's lacrosse coach Mike Mahoney '93 and head women's lacrosse coach Jodi Axtell Canfield '91 M'05, each of whom played under the honored coaches in their respective sports. Mahoney noted that Leet “treated athletes fairly and with respect but also pushed us to reach our potential,” and thus was a major influence on “who (his former players) are today.” Canfield explained that more than merely coaching a sport, Hall “fostered personal growth and development, and the life lessons that come with involvement in sport.”

Head Field Hockey Coach Fran Grembowicz called Hall a “pioneer” in the establishment and acceptance of women's athletics at St. Lawrence. President Fox named both Hall and Leet “Laurentian giants.”

Referring to both facilities, Athletics Director Margie Strait M'73 said, “We are grateful for the support from alumni, parents and friends that made the upgrades to our facilities possible. Our student athletes and our coaches will benefit, and the improvements will assist in our recruiting as well.”

The dedication ceremonies took place following the St. Lawrence-Hamilton field hockey game, and before a men's lacrosse intra-squad scrimmage. In addition to parents and friends, hundreds of alumni from Coach Hall's and Coach Leet's teams returned to help honor them.

# Endowed Scholarship Established in Memory of Professor Peckham



Donald C. Peckham, the late Hayward Emeritus Professor of Physics, devoted his 32 years at St. Lawrence to the student body. After his death in 2009, his widow and six children established the Donald C. Peckham Endowed Scholarship in 2010 to continue his legacy at the University.

"Education is the thing that he took the most pride in," Kimberly Cooper '11, Peckham's granddaughter, says. "If it was in the classroom, out in the world, any chance he had to teach, he took it."

Though she never discussed the idea of a scholarship with her husband, Elizabeth "Betty" Peckham, who still resides in Canton, thought "it would be nice to put his name on something," she says.

The six Peckham children (David, of Santa Barbara, Cal.; Bruce, of Duluth, Minn.; Stephen, of Austin, Tex.; Laura Cooper, of Wolfeboro, N.H.; Barbara Hoyt, of Boulder, Col.; and Christopher, of Chicago) each contributed to the fund and helped with the wording of the terms. "We wanted to confirm that the scholarship would not be a portion of need-based financial aid, but a merit-based supplement to it," explains Betty.

The scholarship will be awarded based on academic accomplishment in the sciences, and specifically in the professor's field, physics. "This would have meant the world to him," Cooper

says. "He's looking down on us quite happy that this is coming together."

While on campus, Peckham's focus was always centered on his students. Betty remembers many evenings when the devoted professor would be late for dinner and say, "I was ready to leave, but another student walked in!"

Brian Watson, associate professor and chair of physics and one of Peckham's colleagues, recalls the close relationship between Peckham and his students in the form of practical jokes. "Don was the victim of an elaborate one in which they turned his office into a dorm room," he says. "It was complete with a mattress on the floor, clothes strewn about, old banana peels, smoking 'paraphernalia,' a citation from an RA for having too many tapestries on the walls, and a second citation for subjecting the RA to verbal abuse. The citations were signed by his daughter, Laura, who was the head RA at the time."

Peckham graduated from Oberlin College in 1948; his undergraduate years were interrupted by a 39-month hitch in the U.S. Army during World War II. After earning graduate degrees at the University of Michigan and Penn State, he taught briefly at

Norwich University. He joined the SLU community in 1954 as an assistant professor of physics. He was promoted to associate professor in 1957 and to full professor in 1965. In 1961 and 1966 he won prestigious National Science Foundation Science Faculty Fellowships.

Peckham served as chair of the physics department for 25 years. In 1970, he helped establish Faculty Council, later serving as its chair. He was acting vice president and dean of the University for the academic year 1976-77. Active in the Canton community, Peckham served on many school, church and nursing home boards, and was also a member of the New York State School Boards Association, where he served as vice president.

Peckham was named the Alvinza Hayward Professor of Physics in 1971. In 1985 he received the J. Calvin Keene Award (pictured) in recognition of "his intolerance of shabbiness and his outspoken insistence of excellence in both teaching and scholarship," according to the citation. Retiring a year later, Peckham continued to participate in campus and community affairs until his death in 2009. According to Cooper, he had made arrangements to donate his body to medical science for research purposes, so "he could keep on teaching after he was gone."

— Haley Bourke '12



*The Peckham family, comprising Betty and Don, center, their six children and numerous grandchildren, gathered in Duluth, Minn., for Christmas 2006.*

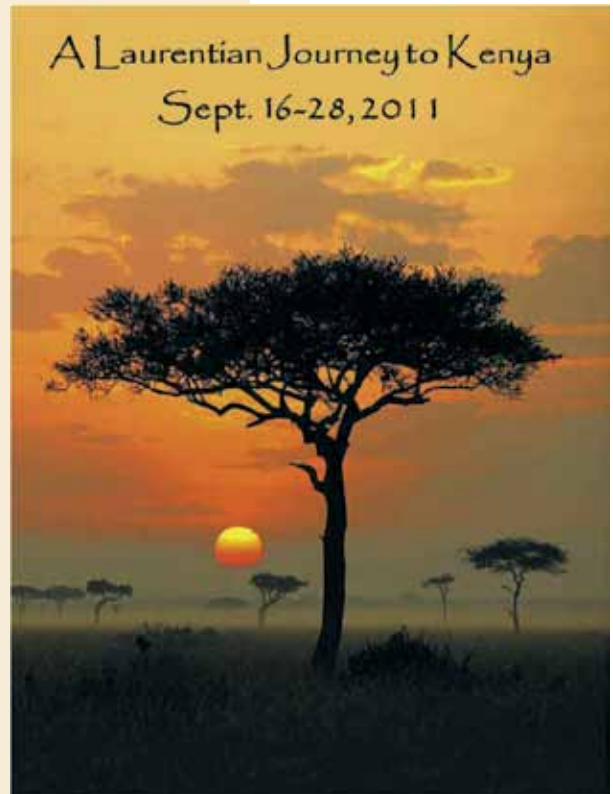
# A Laurentian Journey to *Kenya*

September 16 – 28, 2011

Experience the stunning beauty and wildlife of Kenya during this customized itinerary specially designed for SLU alumni, parents and friends. From the semi-arid lands of northern Kenya to the vast plains of the Serengeti, this 13-day journey will provide an intimate view of Kenya led by St. Lawrence University Professor Emerita Celia Nyamweru and Kathleen Perkins Colson '79, recent recipient of SLU's Sol Feinstone Award for Humanitarian Service for her work with the pastoral nomads of northern Kenya. The trip will include a talk by Professors Ndirangu and Sinnary of the SLU Kenya Semester program, a private visit to an elephant orphanage and a visit to a school in the Kibera slums of Nairobi. For a full itinerary, registration form and detailed travel information, visit [alumni.stlawu.edu](http://alumni.stlawu.edu) or call Kim Hissong, director of alumni and parent programs, at 315-229-5837. The safari will be capped at 22 participants, so register today to hold your space!

**Cost per person sharing a double room:** \$4,429, land only  
**Cost per person in a single room:** \$5,329, land only

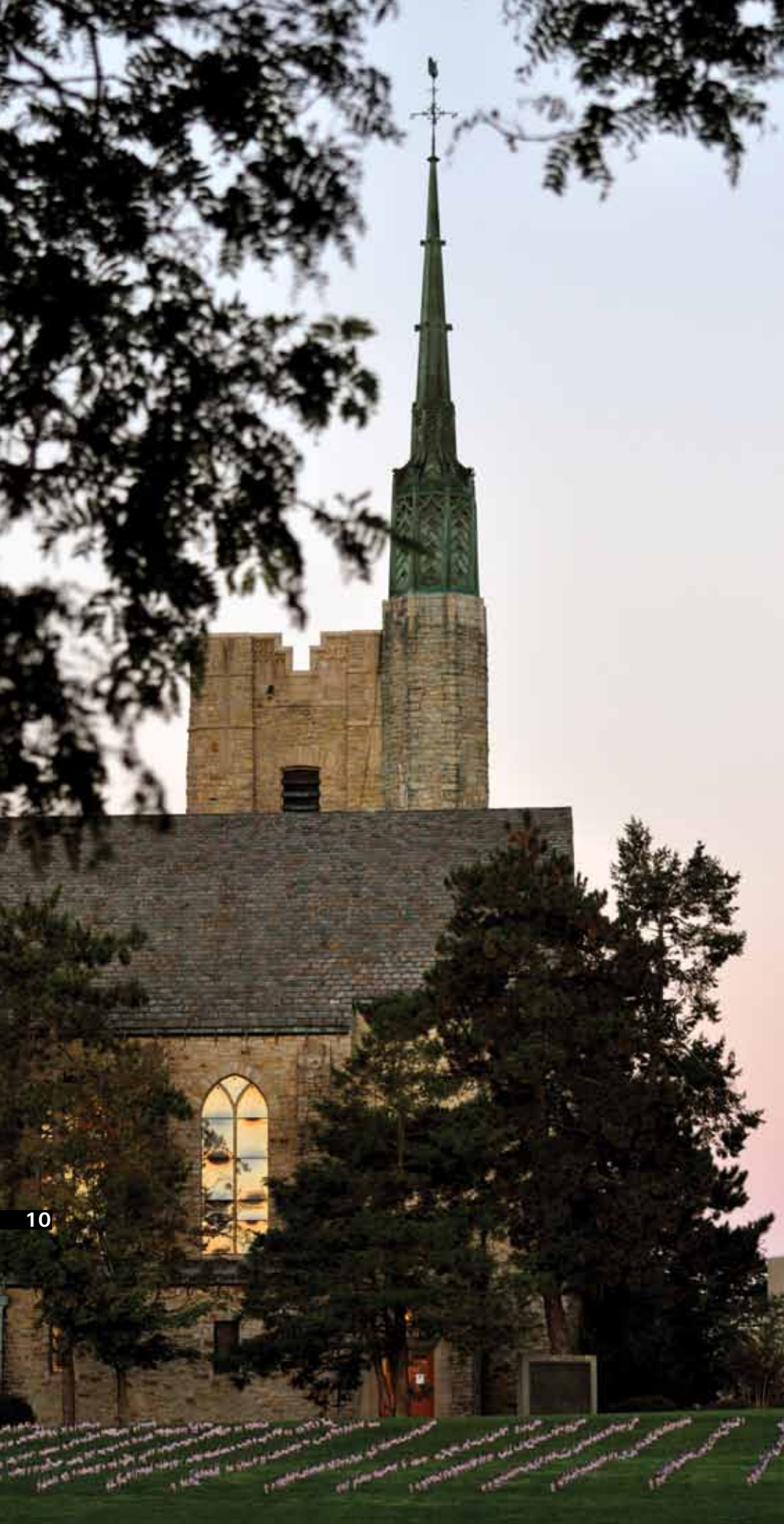
\*The above rates are based on a minimum of 15 people traveling. Reduction in the number of passengers below 15 will result in an increase in the quoted fare. Cost per person does not include participant's airfare. Recommendations for airlines can be provided.



## MEET PRESIDENT FOX

President Bill Fox '75 has the following reception schedule for the 2010-11 year. Details of events will be updated throughout the year; go to [alumni.stlawu.edu](http://alumni.stlawu.edu) and look under Saints Network Events on the right-hand side.

Location	Date	Hosts	Venue
<b>2010</b>			
Lake Placid, NY	August 17, 2010	Jay '77 and Val Lanigan Ireland '77	Ireland Residence
Minneapolis, MN	October 4, 2010	David '65 and Joanne Laird P '92 Kevin '74 and Beth Anton Dooley '75	Minneapolis Club
Chicago, IL	October 6, 2010	David '79 and Suzu Graham Neithercut '78	Neithercut Residence
Rochester, NY	November 9, 2010	Jim '77, P'08 and Carmen Brush	Brush Residence
Buffalo, NY	November 10, 2010	Peter '75 and Mary Jo Faucher Hunt '76, P'04	The Saturn Club
Greenwich, CT	November 30, 2010	Charles and Georgette Mallory P'12 John '85 and Mary Stichter	Delamar Greenwich Harbor
Northern NJ	December 2, 2010	John '85 and Leslie Veith Reed '87 Curt and Cissy Viebranz	Somerset Hills Country Club
<b>2011</b>			
Vero Beach, FL	March 14	Gene '63 and Karen Simonsen	Simonsen Residence
Sarasota, FL	March 16	Chris Koski '79 and Beverly Koski P'79, '82	The Field Club
Boston, MA	April 14	Greg and Mary Ferguson P'13 Dan and Julie Willis O'Connor '79, P'12 Julia Whitcavitch-DeVoy '90 and John DeVoy III Scott '81 and Pam Morse Stewart '82	Fenway Park, EMC Club
New York, NY	May TBD	See Web site cited above for updates	
Philadelphia, PA	May TBD	See Web site cited above for updates	



## Gift Enhances September 11 Scholarship

In the September 11, 2001, terrorist attacks, five alumni lost their lives in the planes or on the ground: Robert Coll '88, Catherine Gorayeb '82, Christopher Morrison '89, Michael Pelletier '88 and Richard Stewart '89. Later, these individuals were memorialized by friends and classmates through the creation of the St. Lawrence University September 11, 2001 Alumni Memorial Scholarship. Numerous individuals contributed to the fund initially; in the years since, Chris Gibson '91 has continued in his drive to ensure that the scholarship is well funded and that these alumni are not forgotten. The investment firm Cantor Fitzgerald suffered heavy losses in the World Trade Center attacks. Chris, who is married to Charlotte Friend '92, is a senior vice president at Cantor Fitzgerald's Boston office, and this year he secured a grant from the Cantor Fitzgerald Relief Fund which provided an additional \$50,000 for the scholarship, one of the largest grants the fund has made. Through Chris's efforts, and the generosity of Cantor Fitzgerald, students with need now have access to additional aid, and in pursuing their education they are keeping alive memories of our lost alumni.

*Ranks of U.S. flags, each one representing one of the nearly 2,900 people, including five SLU alumni, who lost their lives in the 2001 terrorist attacks, appeared on the Quad one recent September 11, courtesy of student initiative.*

# Laurentians-in-Residence, Fall 2010: *Connecting Alumni and Parents with Students*



Nine Laurentians representing a variety of fields came to campus last fall to participate in a career panel, conduct informational interviews and present to classes as Laurentians-in-Residence. From left, they were **Don Danforth '89**, founder and president of City Academy in St. Louis, Mo.; **Stephen Schultz '82**, investor relations and corporate communications consultant; **Mark Tavern '94**, A&R administrator for Island Def Jam Music Group; **Jeanne Brooks-Gunn P'12**, director of the National Center for Children and Families and Virginia and Leonard Marx professor of child development and education at Teachers College and the College of Physicians and Surgeons, all at Columbia University; **Page Wages '01**, veterinarian; **Dzifa Yador '11**, student moderator of the panel; **A. Thomas "Tom" Hunt '62**, lead attorney in more than 50 major civil rights cases in the employment discrimination field; **Gloria A. McAdam '79**, president and CEO of Foodshare in Hartford, Conn.; **Mark "Dill" Driscoll '74**, chairman and founder of *ignition, inc.* and entrepreneur-in-residence at the University of Georgia's Terry School of Business; and **Jared Criscuolo '03**, CFO, coastal expedition leader and co-founder of Below the Surface, which promotes water conservation and improved water quality in rivers and oceans. The Laurentians-in-Residence program is sponsored in part by the Alumni Executive Council. For more, see the forthcoming Spring 2011 *St. Lawrence* magazine.

## Saints Network Events, Summer and Fall 2010

- Late summer brought SLU gatherings on the Cape in Nantucket and Hyannis. If you spend time on Cape Cod or the Islands, let the alumni and parent programs staff know, so we can include you in what we hope will become annual summer gatherings.
- SLU alumni, parents and friends gathered together in locations around the country last summer for musical performances: Laurentians gathered for Music in the Vineyard in South Hero, Vt., on August 5, for a performance by Shakedown; on August 12, **Peter '54** and **Alida Isham Millham '56, P'81**, facilitated a gathering of Laurentians in Plymouth, N.H., for "Beethoven: A Triumphant Finale" at the Silver Center for the Arts; and, on September 5 in California, **Hugh Biele '65, P'92** organized a group of fellow alumni, parents and friends for "The Big Picture" at the Hollywood Bowl.



- (Above) Over 140 Laurentians from the North Country and Adirondacks gathered at the home of Trustee **Jay '77** and **Valerie**

**Lanigan Ireland '77, P'00** in Lake Placid, N.Y., on August 17 along with President **William L. Fox '75** and his wife, **Lynn**. Clearly, a good time was had by all, including the president, in blue sport coat.

- Late summer also brought several SLU gatherings at ballgames, including a Redwings game in Rochester, N.Y., on August 29 and a Phillies game in Philadelphia on September 7.
- As summer turned to autumn, our youngest graduates were "welcomed to the city" in several "SLU hot spots" including New York City, Boston, Burlington, the Albany/Saratoga area and D.C., which brought out close to 200 alumni.
- Alumni, parents and friends in Lake Placid, N.Y., gathered for a book launch and reception for the anthology *Why We're*

*Here: New York Essayists on Living Upstate*, edited by Associate Professor of English **Bob Cowser**. Several of the contributing writers were also in attendance, including St. Lawrence

professors **Paul Graham '99**, **Mary Hussmann** and **Natalia Singer**.

- As SLU football successfully competed against Kings Point for the Hoffman Cup on September 25, alumni, parents and friends cheered on the team and then gathered at a tailgate organized by football parent **Roz Robinson P'11**.
- Laurentians in the Midwest gathered at The Minneapolis Club in Minnesota on October 4 at a reception for President **William L. Fox '75** hosted by **Kevin '74** and **Beth Anton Dooley '74** and **David '65** and **Joanne Laird P'92**. On October 6, alumni, parents, friends and **President Fox** and wife **Lynn** gathered in Chicago at the home of **David '79** and **Suzu Graham Neithercut '78**.
- Halloween weekend brought a face-off of the SLU and Clarkson men's ice hockey teams in Lake Placid, N.Y. Over 200 alumni, parents and friends gathered for a pre-game reception at Nicola's Restaurant hosted by **Doug '63** and **Mary Lou Brown M'73**, **John "JD" '64** and **Diane Peterson Reynolds '64, P'88, '00**, and **Al '64** and **Elaine Winstch Walden '64, P'89, '91**. President **William L. Fox '75** and **Lynn** attended and guests received a special visit from Head Men's Ice Hockey Coach **Joe Marsh P'03**.
- On November 9, Laurentians in NYC gathered at the Roger Smith Hotel for a networking event organized by Trustee **Jan Langlois '71** and heard from keynote speaker Trustee **Cheryl Grandfield '73** on "Investing in the New Economy."
- On November 11 in Boston, over 120 alumni, parents, current students and friends gathered at the John Hancock Building for a networking reception hosted by **Tom '74** and **Julie O'Connor P'12**. Panelists included **George F. Colony P'11**, **Linn Parrish Elmes '82**, **Kirsten Bohuny LaMotte '86** and **Brooks Tingle**.
- That same day, President **William L. Fox '75** and **Lynn** joined alumni, parents and friends in Rochester, N.Y., for a reception at the home of Trustee **Jim Brush '77, P'08** and **Carmen Brush**. The following night, the Foxes joined Laurentians in Buffalo, N.Y., for a gathering at the Saturn Club hosted by Trustee **Peter '75** and **Mary Jo Faucher Hunt '76, P'04**.
- As the men's and women's cross-country teams competed in the NCAA tournament, alumni, parents and friends gathered in Waverly, Iowa, to cheer on the Saints on November 20. **Wendy Pavlus '11** capped one of the great individual careers in SLU women's cross country history by winning the NCAA Division



III individual title for the second straight year, while the men's squad, led by Steve Kiplagat '12's fourth-place finish, claimed third in the team competition. Saints running

alumni **Bryan Tolcser '04**, left, and **Brian Hetzel '02** were among many on hand to cheer on the Saints.

- President **William L. Fox '75** joined alumni, parents and friends in Greenwich, Conn., on November 30 for a reception at the Delamar Greenwich Harbor hosted by **Charles and Georgette Mallory P'12** and **John '85** and **Mary Stichter**. President Fox then traveled on to New Jersey to join alumni, parents and friends on December 2 at the Somerset Hills Country Club in Bernardsville for a reception hosted by **John '85** and **Leslie Veith Reed '87** and **Curt and Cissy Viebranz**.

*For information on upcoming regional events, visit [alumni.stlawu.edu](http://alumni.stlawu.edu) and join the Alumni Association group for additional information on events in your area.*

*If you are interested in helping to coordinate an event in your area, call the Alumni and Parent Programs Office at 888-758-4438 or e-mail [app@stlawu.edu](mailto:app@stlawu.edu).*



**SAVE THE DATE!**

## Reunion '11 • June 2-5

### HIGHLIGHTS OF THE WEEKEND INCLUDE:

Campus tours, Friday day trips, seminars, alumni parade, awards ceremony, class receptions and dinners, entertainment, Laurentian Singers concert and the Service of Remembrance.



Visit the Reunion 2011 website at [alumni.stlawu.edu](http://alumni.stlawu.edu) throughout the year for more details. Look forward to letters from your Reunion Planning Chairs about the weekend's events and from your Reunion Development Chairs on opportunities to participate in the class gift.

#### Classes with Milestone Reunions:

5 <sup>th</sup> – 2005	40 <sup>th</sup> – 1971
5 <sup>th</sup> – 2006	50 <sup>th</sup> – 1961
5 <sup>th</sup> – 2007	55 <sup>th</sup> – 1956
10 <sup>th</sup> – 2001	60 <sup>th</sup> – 1951
25 <sup>th</sup> – 1986	65 <sup>th</sup> – 1946
30 <sup>th</sup> – 1982	70 <sup>th</sup> – 1941
30 <sup>th</sup> – 1981	75 <sup>th</sup> – 1936
30 <sup>th</sup> – 1980	Laurentian Singers – 65 <sup>th</sup> Reunion



Over 30 alumni, parents and friends in Portland, Ore., assembled at Mastrovino on October 14 for an on-your-own gathering organized by volunteers **Lisa Skalny Hill '85** and **Suzy Palmer Kabeiseman '85**.

# New York City Semester in Planning Stages

*Continued from page 1*

cultural centers in the United States,” says Vice President for University Advancement Michael P. Archibald. “An invaluable resource that can help bridge this gap is the Laurentian network of influential alumni and parent leaders throughout the country, and especially in New York City. It is time for St. Lawrence to further tap this resource by establishing a program of study in Manhattan, one that takes advantage of internship opportunities provided by New York City Laurentians.”

The University’s commitment to this program was spurred by recent market research showing that high school students’ interest in St. Lawrence would increase with the addition of a semester program in New York City. Further, 58% of high school guidance counselors surveyed indicated that the addition of a New York City Semester Program

a significant innovation for the University at a time when colleges and universities are confronted with overall budget reduction constraints. This distinctive program will move us ahead competitively as peer institutions remain constant or reduce their investment in new programs.”

The internship is a key component of the program, and “would help achieve our goal of offering a significant experiential course or academic experience to each of our students,” says Vice President for Academic Affairs Valerie Lehr. “National research shows that such experiences have a high impact on student learning. Further, the experience of studying and living in New York City will expose participating students to the most multicultural city in the United States, fostering their growth as global citizens.”

## How It Would Work

Students will receive four units of credit for their semester, just as they would on campus. One course will be taught by the program director, and will provide an introduction to New York City. Peter FitzRandolph, associate professor of economics and program director in its first year, comments on his inaugural course offering, A Financial History of the United States: “The reading

will be primarily novels and biographies, and will concentrate on people like Alexander Hamilton, William Duer, Alexander Macomb, Robert Morris, David Parrish, J.P. Morgan and others. It will trace the evolution of Wall Street from the pre-Revolutionary 1770s to today. Required field trips will include the New York Stock Exchange, the New York Mercantile Exchange, the Morris-Jumel Mansion, the J.P.



*Laurentians have a history of providing internships in New York City, a history that will need to continue with the New York City Semester. David Officer '67, center, supplied many in the financial sector, and many of those interns continued the tradition by offering internships themselves. Officer is pictured with two of his interns, Tim Bello '04, left, and Bill Cummings '05. Both now work in financial management in New York.*

Morgan Library, Ellis Island, the Tenement Museum, and possibly other destinations.”

Adjunct faculty members will teach a finance course for those students doing a finance internship and a class on museum studies for students doing internships in the arts. Students will also participate in a credit-bearing internship for

in this area will be offered an appropriate elective.”

St. Lawrence expects to be able to finalize arrangements to use some world-class teaching facilities in New York. Meanwhile, the University is exploring two possible student housing options: the 92nd Street Y, and Educational Housing Services on 3rd Avenue.

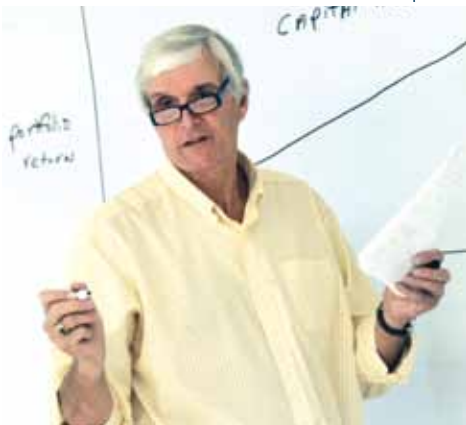
*The New York City Semester, focusing on two arenas in which that city is a worldwide hub – business and the arts – aims to enroll students for the first time in the Spring 2012 semester.*

## What’s Needed

The New York City Semester must be funded for its first 10 years through new gifts. A total of \$4,000,000 will be required to finance the program for this period. “As we approach the end of the first decade of the program, assuming it’s successful, the University will need to decide either to raise sufficient endowment funds designated for this purpose (approximately \$10,000,000), or integrate these costs into the University’s overall financial

3.5 days a week for 15 weeks, and will write regularly about their experiences. Beginning at the midpoint of the semester they will do an independent study in which they link their internship experience to academic research.

“Although we will pilot the program with only two tracks, one in finance and one in the arts, after an initial phase we hope to add a third strand in communication/media studies,” says Archibald. “Students who do internships



**Peter FitzRandolph**

would increase their interest in recommending St. Lawrence to their college-bound students.

“The New York City Semester complements the University’s other ambitions stemming from the market study, such as exploring a robust undergraduate business-related program and facilitating an internship experience for as many students as possible,” adds Archibald. “It represents

structure, or some combination of both,” says Archibald.

In order to launch the program in January 2012, gifts and pledges totaling \$4 million must be secured before spring 2011, so that the University can properly plan the launch and so that students can apply. As of December 31, 2010, \$2.7 million had been committed.

The University is pleased to announce that John Angelo '63 and Judy Hart Angelo '64 have agreed to commit \$1,000,000 in matching funds at a ratio of 1:3. For every three dollars raised for the program they will give one dollar, up to \$1,000,000. The University is most grateful for their generosity and vision and seeks lead gifts from a number of donors of \$300,000 or more, payable over up to five years, to complete, along with the Angelo Challenge, the \$4,000,000 fund-raising initiative. “Of course, gifts at all levels will be gratefully accepted to benefit the program,” Archibald notes.

Additionally, the University seeks to secure 15 guaranteed

internship opportunities per semester from alumni and parents in finance and the arts. At press time, University officials were in active discussions with a variety of organizations, including Epic Theatre and Primary Stages, that have expressed serious interest in hosting program interns.

“The St. Lawrence New York City Semester Program is a natural addition to the University’s academic offerings,” Archibald concludes. “The program will leverage our already significant presence in Manhattan with alumni and parents, and enhance it. It will provide students with an enriching urban experience to complement their time on campus. Adding the program is a significant strategic step toward enhancing our emphasis on internships and experiential learning opportunities. It will make us unique relative to almost all of our competing peer institutions. With appropriate resources secured to move forward, St. Lawrence is eager to launch the New York City Semester.”

*Adding the program is a significant strategic step toward enhancing our emphasis on internships and experiential learning opportunities.*



Henry Ray Adams / AP



Ed Forbes '02

## John and Judy Hart Angelo Love New York

**T**hey love it so much they want to share it with St. Lawrence students.

The Laurentian couple – John, CEO of Angelo, Gordon and Co., a private equity firm that manages \$23 billion in assets, graduated from St. Lawrence in 1963; Judy, a well-regarded songwriter whose credits include the theme song from “Cheers,” earned her degree in 1964 – met in New York in 1967 and have called the city home ever since.

Last year, they shared their affinity for the Big Apple with a group of 14 St. Lawrence students. Over two days, the group galloped at marathon pace through a seminar on the recent financial history of the United States that drew considerably from the complex workings of the securities industry and also offered exposure to philanthropy, journalism and the law. From their deep Rolodexes, the Angelos assembled a cast of New York titans for a series of discussions with the students, who proved an impressive bunch.

“It turned out so well,” John Angelo explained at an October gathering of New York Laurentians that he and Judy hosted at the Park Avenue offices of Angelo, Gordon and Co. “The students were attentive. They asked a lot of really good questions.”

The event was such a success, John said, that he and Judy immediately began exploring ways they could help St. Lawrence support a similar experience again. And again. And again. So they’ve pledged \$1 million in matching funds to launch a semester-long program in New York City, as explained in the accompanying story.

Days after the 2009 seminar concluded, John spoke at the opening of Pepperdine University’s semester in Washington, D.C. It was then, he says, that the idea to offer a New York semester crystallized. “I thought, “This is the financial capital, the cultural center, and kids are going [to study] all over the world. Why not New York?”” John recalls thinking. “Why can’t we do that for St. Lawrence?””

Judy, who studied at the Sorbonne in Paris during her junior year, agreed. Of the students who attended the 2009 seminar, she said, “there were a considerable number who’d never been to New York.” Offering St. Lawrence students exposure to all parts of the world – the Adirondacks, Kenya, New York City – sets the University apart, Judy says. “Who can top that?”

--Ed Forbes '02

**Momentum  
 St. Lawrence Concludes**

*Continued from page 1*

continues. "In considering both initiatives we will be able to celebrate over \$300 million in St. Lawrence philanthropy from 1997 to 2010. This is an extraordinary achievement in these difficult times, and the campus community is forever grateful to our loyal supporters for strengthening the University, and all of our experiences at the University, over the last many years."



**Join the Fun:**

- *Celebrate the Success of Momentum St. Lawrence*
- *Friday and Saturday, February 25 and 26, 2011*
- *Lectures*
- *Tours of new campaign-funded facilities*
- *Celebration Picnic*
- *Student/Faculty Interaction*



*Campaign Momentum St. Lawrence has had a transformative effect on all aspects of life at St. Lawrence: social, academic, cultural and athletic, represented by these images: Clockwise from top, a First-Year Program ice cream social in Sullivan Student Center; "Brain Blast," in which SLU students bring the excitement of science to local children, in Johnson Hall of Science; refurbished North Country Field (a field hockey game under way); the Alexander String Quartet, first performers in Peterson-Kermani Performance Hall; and Hall-Leet Stadium (men's lacrosse alumni, major supporters of the project). For details on last fall's dedications of the latter three, see pages 6 and 7.*